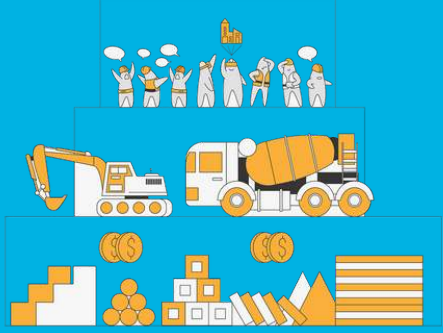


# Membership Has It's Value

CBC is a vertically integrated trade association serving the Chicagoland area.



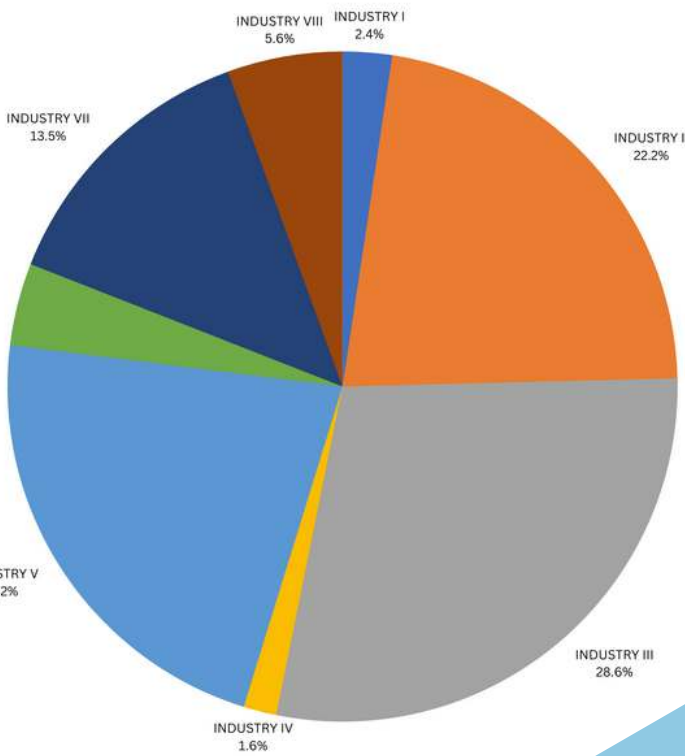
## VERTICAL INTEGRATION

Vertical integration is the combination in one industry of two or more stages of production normally operated by separate companies. Chicago Building Congress (CBC) is a vertically integrated trade association serving the Chicagoland area.

CBC's diverse membership includes general contractors; subcontractors; material suppliers; architectural/engineering firms and consultants; real estate and development firms; labor unions/trade associations; governmental and educational entities; legal and accounting professionals; financial, insurance and bonding firms.



## INDUSTRY DIVERSE MEMBERSHIP



- INDUSTRY I: ASSOCIATIONS & GOVERNMENT AGENCIES
- INDUSTRY II: ARCHITECTS & ENGINEERS
- INDUSTRY III: SERVICES TO THE INDUSTRY
- INDUSTRY IV: DEVELOPMENTAL ENTITIES
- INDUSTRY V: GENERAL CONTRACTORS
- INDUSTRY VI: LABOR UNIONS
- INDUSTRY VII: SUBCONTRACTORS
- INDUSTRY VIII: MATERIAL MANUFACTURERS & SUPPLIERS



## INCLUSION, DIVERSITY, EQUITY, AND ACCESSIBILITY (IDEA)

### NEW MEMBERSHIP CATEGORY

Minority, Disadvantaged, and Women-Owned Businesses

**CBC Diversity Committee Mission Statement:** The CBC recognizes that one of the Chicagoland construction industry's greatest strengths is the diversity of its people. The CBC believes that fostering an environment that is equitable, inclusive, and provides greater opportunities for diverse perspectives will help contribute to the industry's future success. The CBC is committed to promoting and supporting greater equity, diversity, and inclusion for people from all backgrounds, races, nationalities, genders, sexual orientations, and abilities. The CBC Diversity Committee will support the diversity, equity, and inclusion efforts of the CBC through education, mentorship, membership outreach, and other strategic activities.

### IDEA Member Events

- Pathways to Progress in Diversity, Equity & Inclusion
- Challenges & Benefits of Diversity

Cross Collaborative Partnerships with Minority Organizations such as the following...



*Inclusion, Diversity, Equity, and Accessibility Makes our Profession Stronger*

# Membership Has It's Value

CBC is the only vertically integrated trade association serving the Chicagoland area.



The Chicago Building Congress (CBC) uniquely represents the entire construction industry, uniting its diverse membership by sharing knowledge and creating networking opportunities to build authentic relationships.

Our active membership celebrates the built environment, recognizes individual contributors, and advocates for the industry's future leaders. The CBC is the "cornerstone" of Chicagoland's dynamic building industry; its committed members unite and actively work together to fulfill a common purpose by...

- Providing professionals with educational and networking opportunities that promote future leadership
- Advancing the art, science, and technology of the building industry
- Recognizing and celebrating the buildings that enhance the economic, aesthetic, and social environment in our community
- Generating opportunities to serve the community and assist those who wish to join our industry



## MISSION STATEMENT

It is imperative that CBC focuses on member engagement on an ongoing basis. This is why we do the following:



Post on our Social Media platforms twice a week

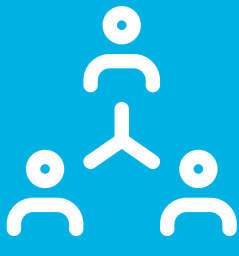
Bi-Weekly E-Newsletters Mondays & Wednesdays



Weekly E-Blasts Updates & Upcoming Events



## E-COMMUNICATIONS



## PEER MENTORING/ DISCOVERY GROUPS



ARCHITECTURE • CONSTRUCTION • ENGINEERING

The CBC has partnered with the ACE Chicago Mentor Program to help their students take a hands-on approach to learn about careers in architecture, construction, engineering and related professions. The programs involve students in activities that help them build skills they can carry over to school subjects, such as graphic design, art, math and engineering. These activities give them a strong foundation on which to base future careers.



Discovery Groups utilize the power of group collaboration and engagement to enhance the CBC experience through the development of cross-divisional groups that offer more opportunities for networking, mentoring and personal development.

Networking means building connections with other professionals in the industry. The reason why networking is so important to CBC and our members is that it builds a better reputation, increases your visibility, strengthens your support network, improves business growth, introduces you to industry leaders, provides career development and growth, and more impactful connections. Statistically apart from helping you find new clients and boost your career growth, the main reason why networking is so vital to CBC is that it opens up new employment opportunities. Make sure to build an online presence, keep in touch with your network, and regularly participate in CBC's many networking events.



## NETWORKING IS VITAL TO GROWTH



The CBC's Future Leaders Program is an initiative dedicated to developing its young professional members into the future leaders of the industry. Future Leader events are designed for individuals with five to 20 years of experience in the construction industry who want to become more involved, build networks, develop their careers, and give back to the community. By providing valuable network, career development, and community service opportunities, future leaders can hone the skills necessary for them to lead tomorrow's industry, while also increasing their involvement in the CBC.

